



This manual is for reference and historical purposes, all rights reserved.

**This page is copyright© by M. Butkus, NJ.**

This page may not be sold or distributed without the expressed permission of the producer

I have no connection with any camera company

On-line camera manual library

This is the full text and images from the manual. This may take 3 full minutes for the PDF file to download.

**If you find this manual useful, how about a donation of \$3 to: M. Butkus, 29 Lake Ave., High Bridge, NJ 08829-1701 and send your e-mail address so I can thank you. Most other places would charge you \$7.50 for a electronic copy or \$18.00 for a hard to read Xerox copy.**

**This will allow me to continue to buy new manuals and pay their shipping costs.**

**It'll make you feel better, won't it?**

**If you use Pay Pal or wish to use your credit card,  
click on the secure site on my main page.**

PayPal Name Lynn@butkus.org

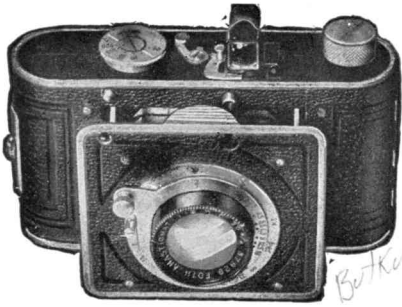
FOTH - DERBY

*Cameras*



The MOST  
OUTSTANDING  
VALUE IN  
THE MINIATURE  
CAMERA FIELD

BURLEIGH BROOKS  
Incorporated  
NEW YORK



## F O T H   D E R B Y

Light and compact, weighing no more than 12 oz., and measuring only  $4\frac{3}{4} \times 2\frac{3}{4} \times 1\frac{5}{8}$ " overall, the Foth Derby constantly accompanies a constantly growing number of minicamerists. High optical precision, extreme mechanical thoroughness, effortless ease in manipulation, refinements of every conceivable nature,—are, in the Foth Derby, combined with a price range that renders this series the most widely used and highly appreciated of miniature cameras.

Its latest model delayed-action focal plane shutter with speeds ranging up to  $1/500$  second enables one to capture birds on the wing, speeding trains, airplanes in transit, racing automobiles and motorcycles, and other rapidly moving objects. Its rapid lenses make possible excellent results even under adverse lighting conditions; its large tube-sight view-finder facilitates sighting of the subject, which is readily discerned in detailed form.

Yet a camera is no better than its optical equipment. In the Foth Derby, the clarity and "detail" of the fine Foth anastigmat lens produce negatives which make possible enlargements that bear all the distinguishing characteristics of good contact prints. The short focal length of the 2-inch objective permits a considerable degree of latitude in setting the focusing scale, obviating the danger of out-of-focus pictures under conditions when it is essential to be "quick on the trigger." A distinct advantage of this camera is the delayed-action shutter, which enables the operator to join the group that he is photographing. This shutter may be set to any of the following lens speeds:  $1/25$ ,  $1/50$ ,  $1/75$ ,  $1/100$ ,  $1/200$ ,  $1/500$  seconds; also by means of bulb for time exposures. Other features include green and dark red windows permitting the safe use

---

# A PRECISION MINIATURE CAM

of either panchromatic or orthochromatic film; extreme loading ease; genuine leather cover; standard tripod socket, finger release for releasing shutter, as well as socket for cable release.

The value of a Foth Derby camera must not be gauged by its unusually moderate price. In a recent miniature camera contest, wherein hundreds of pictures were submitted, the first prize was awarded a Foth Derby user who achieved the prize-winning picture with the model provided with an f/3.5 lens. And this is neither a rare nor a novel occurrence. You too can achieve unusual results with a Foth Derby.

**With 2" Foth Anastigmat f/3.5 lens.....\$23.75**

**With 2" Foth Anastigmat f/2.5 lens..... 33.50**

In view of the fact that focusing can be accomplished to a distance of only 2½ ft., no supplementary lens equipment is required.

Foth Derby Cameras make sixteen pictures on standard V. P. (No. 127) roll film. Picture Size: 1¼ x 1⅝ inches.

*All cameras supplied complete with cable release, box, and instructions*

Free Trial Gladly Granted

---

## A C C E S S O R I E S

---

- Soft Suede Case with Chamois Lining and Talon Zipper ..... \$ 1.50
- Plush-lined Sole Leather Case with neck-strap and key ..... 2.00
- Ever-Ready Case with neck-strap for regular model ..... 4.50
- Ramstein - Optochrom optical glass filters—four shades of yellow, two of green, red, and blue ..... 2.50
- U. V. or graduated ..... 3.50
- Bee Bee Negative File—For safe film storage ..... 2.00
- Nikor Developing Tank—Stainless Steel—Non-corrosive ..... 6.75
- Viscose Film Drier ..... 2.00

**Sold by:**

---

**AMERA AT A POPULAR PRICE**

# F O T H D E R B Y E N L A R G E R

IDEAL FOR  
F O T H D E R B Y  
and  
OTHER MINIATURE  
CAMERA NEGATIVES

Price complete with f/3.5, 2" anastigmat lens with diaphragm, and double condensers, special white ray enlarging bulb, glass negative holder and combination metal mask, not including baseboard \$26.50.



Extra combination metal mask.....	\$2.00
Extra baseboard, 16"x20".....	1.50
Extra special white ray enlarging bulb.....	.40
Extra 4 1/2" condenser.....	2.00
Extra 2 5/8" condenser.....	1.50

Unexcelled for enlargement of motion picture and miniature camera negatives, 4x4cm. and smaller. Ideal for professional laboratories.

- 2" Foth anastigmat f/3.5 lens with diaphragm.
- Focusing knob on lens collar adjustable to three positions permitting lens to be used closer to negative, allowing the user to obtain tremendous enlargements, limited as to size only by the quality of the negative. By swinging the lamp-house away from the baseboard and placing the paper further away, enlargements up to forty times, and even greater, are possible.
- Double Condensers.
- Standard heat-proof socket.
- Red filter for placing paper.
- Light control switch and long, five-foot, electric light cord.
- Well-ventilated lamphouse, permitting the use of opal photoflood bulbs, facilitating enlarging from dense negatives on slower papers.
- Ingenious all-metal negative holder, easily adjustable at will to four size openings, for 24x36 mm., single cine frame, 3x4cm., and 4x4 cm. negatives.
- Glass negative holder, making possible enlarging with negative between glass.
- **Adjustable rod for raising and lowering of the bulb, to insure even illumination.**