

This manual is for reference and historical purposes, all rights reserved.

**This page is copyright© by M. Butkus, NJ.**

This page may not be sold or distributed without the expressed permission of the producer

I have no connection with any camera company

On-line camera manual library

This is the full text and images from the manual. This may take 3 full minutes for the PDF file to download.

**If you find this manual useful, how about a donation of \$3 to: M. Butkus, 29 Lake Ave., High Bridge, NJ 08829-1701 and send your e-mail address so I can thank you. Most other places would charge you \$7.50 for a electronic copy or \$18.00 for a hard to read Xerox copy.**

**This will allow me to continue to buy new manuals and pay their shipping costs.**

**It'll make you feel better, won't it?**

**If you use Pay Pal or wish to use your credit card,  
click on the secure site on my main page.**

How to take photographs with the



# "PENGUIN"

## Roll Film Camera

---

For type 120 Film

Size  $2\frac{1}{4}$ "  $\times$   $3\frac{1}{4}$ "

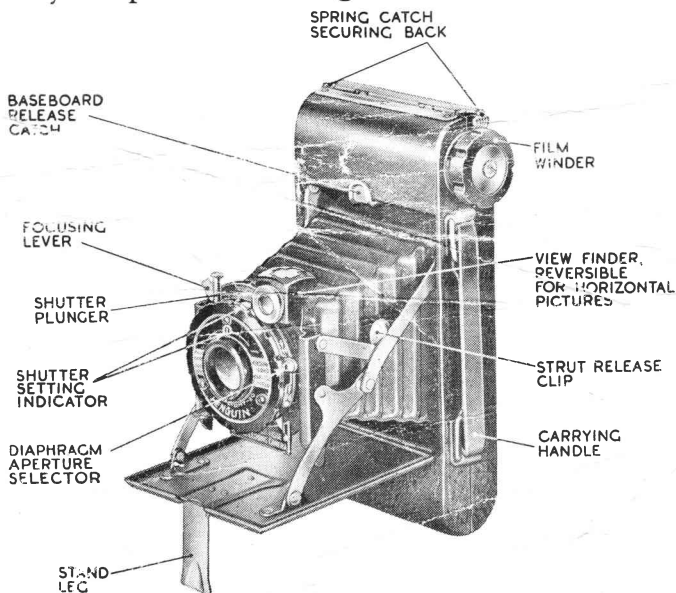
KERSHAW-SOHO (SALES) LIMITED  
IMPERIAL HOUSE - AIR STREET  
LONDON, W.1.

---

Study this booklet carefully and retain it for  
future reference

## *Foreword . .*

The object of this booklet is to show the amateur photographer how simple the mechanism and working of the Kershaw "Penguin" camera really is. Do not attempt to take photographs until the instructions have been read carefully. Master the mechanism—go through the movements of opening the camera, focusing, exposing, and finally closing after use, and only when they are thoroughly familiarised, load your camera with a film and start your picture making in earnest.



**Fig. 1**

# *The Kershaw "Penguin" Roll Film Camera*

## LOADING WITH FILM

1. Remove the camera back by releasing the spring catch at the top of the camera: a gentle pulling away movement from the top is all that is necessary.

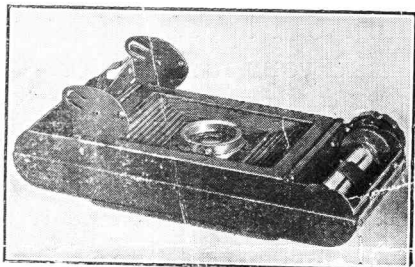


*Fig. 2*

can be swung out for loading with film and for the removal of the spool after exposure (Fig. 3). Place the new roll of unexposed film in this holder and return it to its normal position in the chamber.

(Fig. 2). This action gives access to the spool chambers and in the upper chamber will be found an empty spool.

2. The lower spool holder is hinged to the camera and



*Fig. 3*

## *How to take Photographs with*

3. Slit the gummed paper and unwind sufficient of the protective backing paper to allow the pointed end to be inserted in the wide slot of the empty spool in the upper chamber (Fig. 4). Make sure that the red side of the paper will face the back of the camera and that the protective covering paper winds evenly between the two flanges of the spool.



*Fig. 4*

the camera back is securely hooked in.

5. Again turn the winding key slowly, watching carefully the red window in the camera back, until No. 1 appears. The film is now in position to take your first picture.

4. Give the film winder two or three turns, replace the back of the camera and see that it is secured by the spring catch — make sure, too, that the hinge at the lower end of

### TO OPEN THE CAMERA

1. Press the baseboard release catch at the front of the Camera and the baseboard will be released. Press on the base to ensure that the side struts have “clicked” into position and are fully extended. **THIS IS IMPORTANT**

---

## *The Kershaw "Penguin" Roll Film Camera*

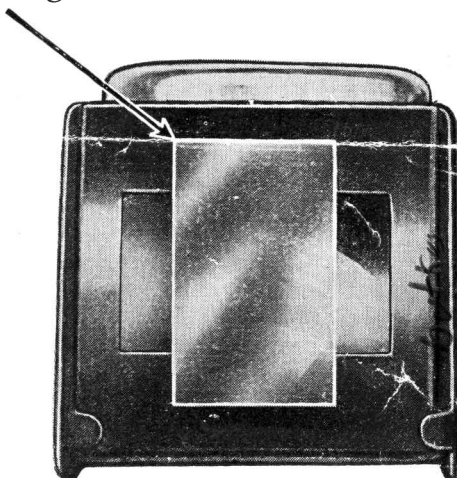
---

### THE VIEW FINDER

The use of the view finder is clearly shown in Figs. 5 and 6.

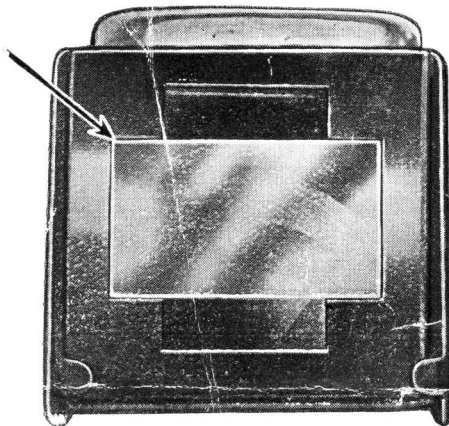
The space enclosed by white outline in Fig. 5 contains the picture which will be reproduced on the film when the camera is held in an UPRIGHT position.

*Fig. 5*



When the camera is held in a HORIZONTAL position, the picture to be reproduced will be seen in the viewfinder within the area enclosed by a white outline in Fig. 6.

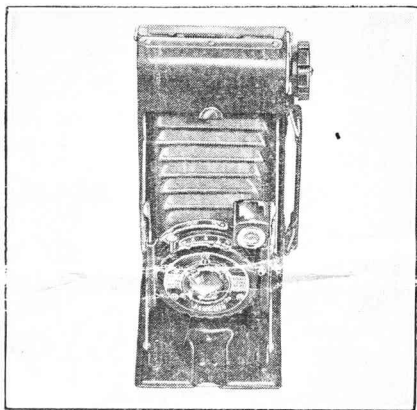
*Fig. 6*



## MAKING THE EXPOSURE

### SNAPSHOTS.

Having loaded with film and opened the camera, an exposure may now be made. Note the distance (in feet) from the camera to the subject you intend to photograph and gently push the focusing lever to a position at which the arrow coincides with figures representing that distance on the distance



*Fig. 7*

scale. For example: If you wish to make a portrait of a subject at say, 6ft., see that the focusing lever coincides with the arrow head marked 6 ft.; for a small group at, say, 10 ft. distance, set the focusing lever at the arrow head indicating 10 ft.; and for making pictures of landscapes or distant views, set the focusing lever at infinity (INF.) Fig. 7.

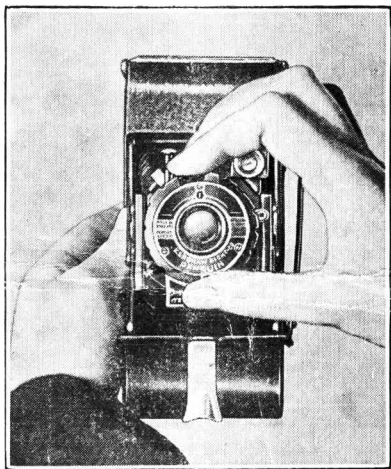
---

## *The Kershaw "Penguin" Roll Film Camera*

---

Slowly revolve the shutter rim so that the letter "I" appears in the circular window in the shutter front, indicating that the shutter is now set for instantaneous pictures or "snapshots" (Fig. 8).

This may be accomplished whilst the camera is held in position for photography and the arrow



*Fig. 8*

head attached to the shutter rim indicates that the shutter is correctly set by coinciding with the letter "I" on the scale on top of the shutter.

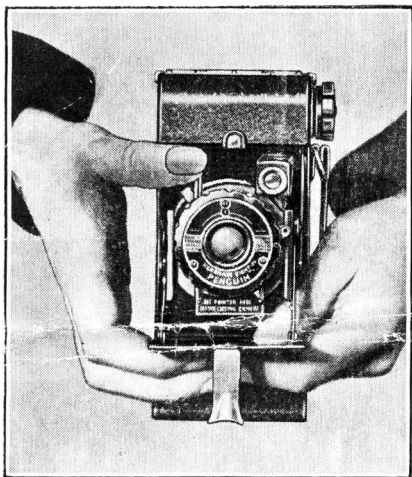


---

## *How to take Photographs with*

---

Having now located the scene in the view finder, to make an exposure the plunger must be pressed home, (Fig. 9) and the thumb then removed, whereupon the plunger springs back to its normal position.



*Fig. 9*

To make a “bulb” or time exposure, revolve the shutter rim to the “B” position, pressure on the shutter release plunger will then open the shutter, which will remain open until the thumb pressure is removed. For such “bulb” or time exposures the camera should rest on some firm object, for which a foot rest is provided.

---

## *The Kershaw "Penguin" Roll Film Camera*

---

The following brief exposure-chart, suitable for use with any standard roll film, indicates which of the two apertures to use when taking photographs.

### *Subject*

### *Aperture*

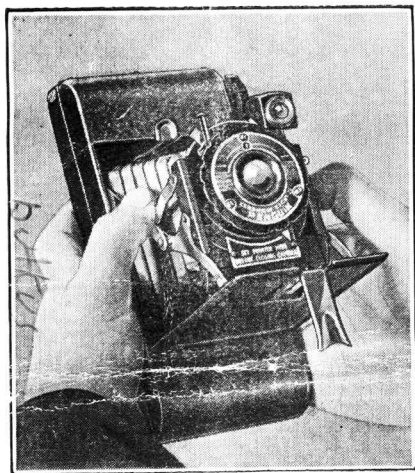
Portraits, groups, street scenes, and landscapes in average or dull light conditions.	f/11
---	------

Open landscapes with no heavy shadows in the foreground. Open seascapes and beach scenes in extremely bright light conditions.	f/16
--	------

Now revolve the film winder until No. 2 appears at the small red window, and the film will then be in position for exposure No. 2.

## CLOSING THE CAMERA

Press gently with the two thumbs on the strut release clips (Fig. 10) and the baseboard will be released from its rigid position. Continue to push



*Fig. 10*

the baseboard back until it is engaged by means of the release catch.

---

## *The Kershaw "Penguin" Roll Film Camera*

---

### UNLOADING THE CAMERA

Having exposed your roll of film, wind off until you see the end of the backing paper pass the red window, then remove the camera back. Continue revolving the film winder until all the backing paper is on the upper spool.

Pull the film winder outwards—remove the spool of film and seal it by means of the gummed paper slip attached to the end of the backing paper.

Take the empty spool and transfer it to the top chamber with slotted end of spool towards the film winder, pull the film winder outwards to permit the spool to enter, and engage the other end of the spool on the bearing stud, then gently push in the winder until the key engages in the slotted spool end. The camera is now ready for reloading.

### USEFUL HINTS FOR THE BEGINNER

Do not jerk the camera or your picture may be blurred.

The lens must be kept clean and not touched by the fingers. It must not be unscrewed because it has been correctly focused to give clear, crisp pictures.

Do not take photographs in poor light.

Never let the sun shine into the lens.

Never close the camera with the view finder on its side.

The range of Kershaw all-British cameras includes models for the beginner, expert, and professional photographer.

Ask your dealer to show you the new  
Kershaw "CURLEW" and "PEREGRINE"  
MODELS

embodying the most advanced design,  
shutter and optical equipment.

He will be pleased to give you full information concerning these new cameras, or details, accompanied by a list of your local dealers, may be had on application to:

KERSHAW-SOHO (SALES) LIMITED  
IMPERIAL HOUSE - AIR STREET  
LONDON, W.1.