

This manual is for reference and historical purposes, all rights reserved.

This page is copyright© by M. Butkus, NJ.

This page may not be sold or distributed without the expressed permission of the producer

I have no connection with any camera company

On-line camera manual library

This is the full text and images from the manual. This may take 3 full minutes for the PDF file to download.

If you find this manual useful, how about a donation of \$3 to: M. Butkus, 29 Lake Ave., High Bridge, NJ 08829-1701 and send your e-mail address so I can thank you. Most other places would charge you \$7.50 for a electronic copy or \$18.00 for a hard to read Xerox copy.

This will allow me to continue to buy new manuals and pay their shipping costs.

It'll make you feel better, won't it?

**If you use Pay Pal or wish to use your credit card,
click on the secure site on my main page.**

www.orphancameras.com

Leiss Ikon Cameras



Orix
(Formerly "Trix")

For Plates and Film Packs 4 x 6" (10 x 15 cm.)

THE Orix, formerly known as Trix, has won an enviable reputation for itself, having been adopted by many of the leading dailies as the most satisfactory camera for this very difficult branch of photography. In order to withstand such hard daily use, in any season and any weather, it must be solidly constructed.

Leiss Ikon Cameras

Press work requires a camera that can be readily concealed about the person, yet producing pictures large enough for newspaper reproduction. It must have a perfect lens both for detail and extreme speed, for the press-photographer cannot choose his light and must be equipped to make pictures under the most trying light conditions. The operation of the camera must be simple, for in many instances but a moment of time is available to make ready and take the picture. The camera must also be suitable for flashlight work, holding the camera and operating the flash at the same time. The Orix meets all of these conditions.

The camera has a bellows capacity of fourteen inches, vertical and horizontal front movements of $1\frac{1}{8}$ and $1\frac{1}{4}$ inches respectively, Icometer as well as a large brilliant view finder, three tripod sockets, hooded ground glass back, and rack and pinion focusing device.

The plate holders are of sheet steel, strong and accurately made. Three of the Orix holders are of about the same bulk as one double wooden holder of corresponding size.

With the camera are included a leather carrying case, three plate holders and film pack adapter.

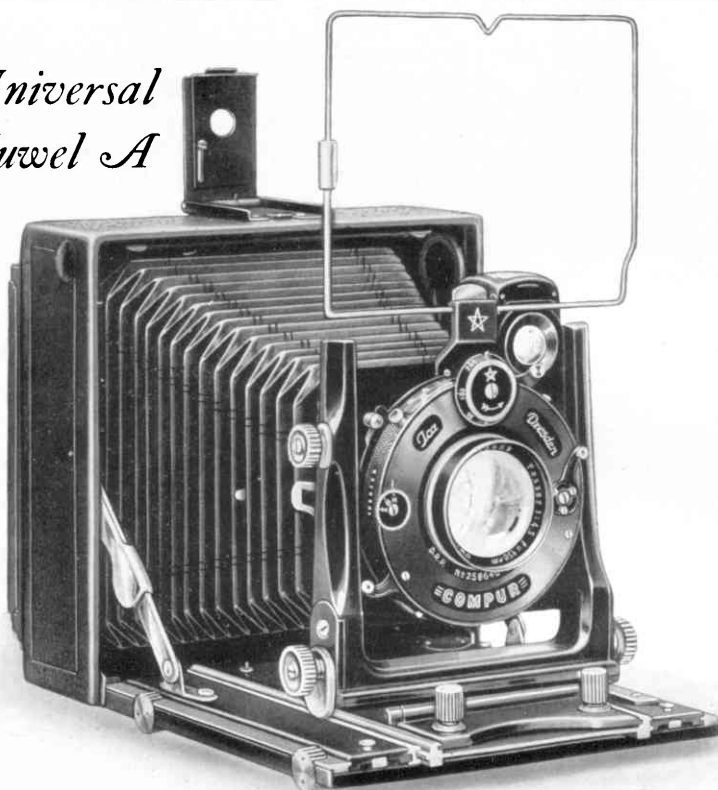
A special press outfit consists of camera, 12 plate holders, 2 cable releases in strong leather carrying case.

Picture Size.....	4 x 6 inch (10 x 15 cm.)
Lens.....	Zeiss Tessar $f:4.5$ of $6\frac{1}{2}$ inch focal length
Shutter.....	Compur with cable and finger release
Speeds.....	1 to $1/200$ sec. Time and Bulb
Bellows.....	Black leather, 14 inch extension
Camera Size.....	$2\frac{1}{4} \times 5\frac{1}{2} \times 7\frac{3}{4}$ inch. Weight: $47\frac{1}{2}$ ozs.

Supplementary lenses Distar and Proxar may be used on this model. See page 49.



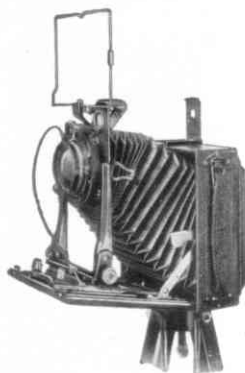
*Universal
Juwel A*



For Plates and Film Packs $3\frac{1}{2} \times 4\frac{3}{4}$ " (9 x 12 cm.)

PORTRAITURE, landscapes, architecture, telephotography, are a few branches of photography which actually become a pleasure when attempted with the Universal Juwel A. Note the extreme rise and the tilting feature of the front, the swing back and the sixteen-inch bellows. The vertical and horizontal front movements are operated by micrometer screw adjustment. Two rack and pinion focusing screws are provided so that the front may be extended by the front thumb screw and the back by the rear thumb screw. The construction is entirely of metal.

Zeiss Ikon Cameras



The clamp-on, double plate holders, as well as film pack adapter are beautifully finished in ebonized hardwood, reinforced with aluminum, and will accommodate plates or film packs 9x12 cm. or $3\frac{1}{2} \times 4\frac{3}{4}$ inch. The back of the camera can be revolved, enabling horizontal and vertical exposures to be made without the necessity of turning the entire camera.

The bellows capacity is ample for the use of Zeiss Distar Lenses.

The camera is especially well adapted for wide-angle work with a Carl Zeiss wide-angle Protar of $3\frac{3}{8}$ inch focal length.

If a wide-angle lens is used, the bed may be lowered and the front set parallel with the back.

A leather carrying case, three double wooden plate holders, a film pack adapter, and cable shutter release are included with each Universal Juwel A.

Picture Size: $3\frac{1}{2} \times 4\frac{3}{4}$ inch (9 x 12 cm.)

Lens: Zeiss Tessar $f:4.5$, 6 or $6\frac{1}{2}$ inch focal length

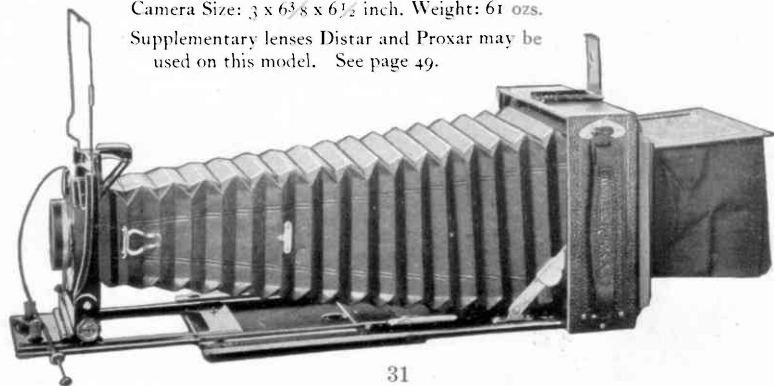
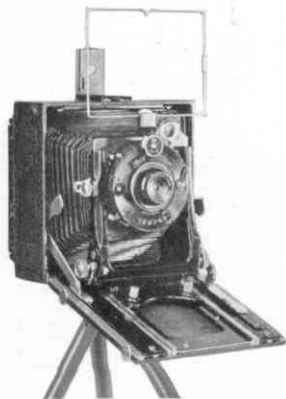
Shutter: Compur with cable and finger release

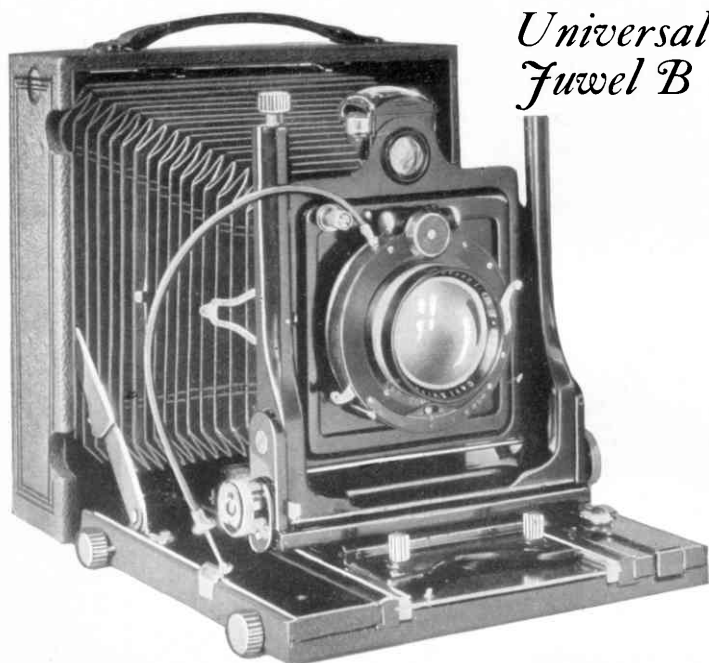
Speeds: 1 to 1/200 sec. Time and Bulb

Bellows: Black leather, 16 inch extension

Camera Size: $3 \times 6\frac{3}{8} \times 6\frac{1}{2}$ inch. Weight: 61 ozs.

Supplementary lenses Distar and Proxar may be used on this model. See page 49.





For Plates and Film Pack 5 x 7".

THE aristocrat of all cameras, the Universal Juwel B, makes its appeal to the whole-hearted, ambitious photographer. It may well be termed "a camera of limitless possibilities".

It is a jewel in appearance as well as in name, microscopically accurate in adjustments, structurally correct, and of perfect design.

The construction of the Universal Juwel B is of ebonized hardwood, metal reinforced. The plate holder or film pack adapter is locked in position by the pressure of a button, an exclusive and valuable feature. The large focusing hood eliminates the necessity of a focusing cloth.

Of utmost importance is the Carl Zeiss Tessar Lens, its large working aperture of $f:4.5$ being suitable for interior

Leiss Ikon Cameras

portraiture, autochromes, exposures in poor light; in fact, wherever perfect optical correction, combined with extreme speed is required, the Tessar is unequalled.

For wide-angle work with an extremely wide-angle lens, the front adjustments of the Universal Jewel B permit dropping of the camera bed, also tilting the lens panel to any angle required.

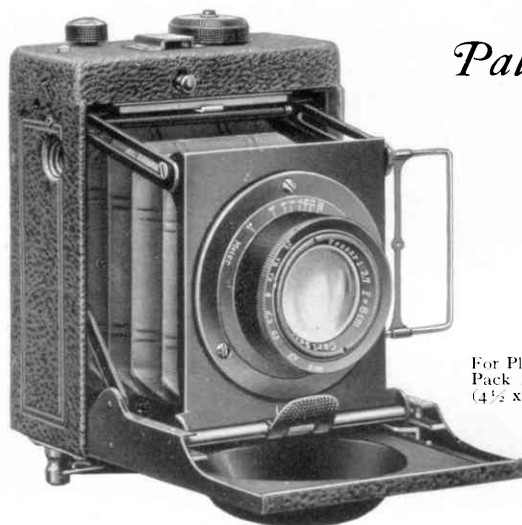
The front of the Universal Jewel B has extreme vertical and horizontal movements, operated by screw mechanism. Both the front and the revolving back of the camera have swing adjustments so that even when the camera is pointed upward at an angle the lens and plate may be set vertical and parallel with each other. These adjustments are the same as illustrated on page 31, showing the Universal Jewel A. In photographing many subjects these movements are absolutely essential to enable one to obtain the best results.

With the Universal Jewel B are included three double wooden plate holders, film pack adapter, and a leather carrying case.

Picture Size.....	5 x 7 inch
Lens.....	Zeiss Tessar f:4.5 of 8 1/4 inch focal length
Shutter.....	Compur with cable and finger release
Speeds.....	1 to 1/100 sec. Time and Bulb
Bellows.....	Black leather, 18 inch extension
Camera Size.....	3 1/2 x 9 x 9 inch. Weight 8 lbs. 6 ozs.

Supplementary lenses Distar and Proxar may be used on this camera. See page 49.





Palmos O

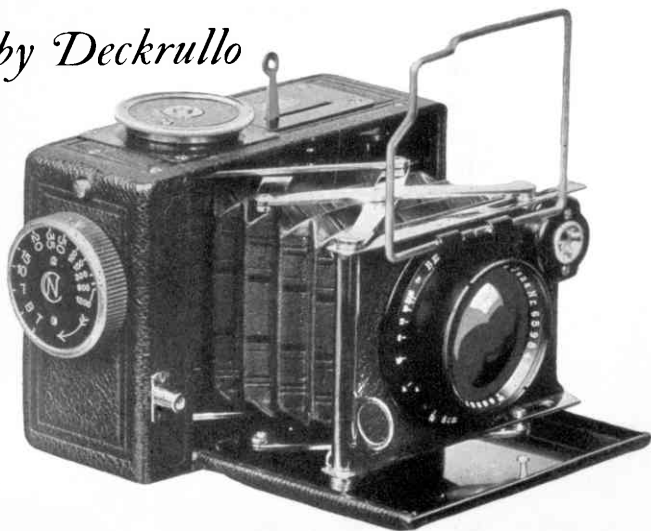
For Plates and Film
Pack $1\frac{3}{4} \times 2\frac{3}{8}$ "
($4\frac{1}{2} \times 6$ cm.)

THE Palmos O is the most practical camera for its particular field of photography. It takes plates and film packs $4\frac{1}{2} \times 6$ cm. Fitted with the Zeiss Tessar $f:2.7$, it will produce pictures under the most adverse light conditions. Then there is the added efficiency of the focal plane shutter of the safety self-capping type with speeds ranging from $1/50$ to $1/1000$ second. The $3\frac{1}{8}$ inch Tessar $f:2.7$ gives sufficient depth of field so that its full aperture may be used when it would be absolutely necessary to use a relatively small diaphragm with a lens of six inch focal length. The camera is of metal construction, leather covered and has leather bellows. When closed the front of the camera protects the lens. Focusing is done by means of the focusing mount of the lens.

A hooded ground glass focusing back, two tripod sockets, Iconometer finder, three metal plate holders, film pack adapter and leather carrying case are included with each camera.

Picture Size.....	$4\frac{1}{2} \times 6$ cm. ($1\frac{3}{4} \times 2\frac{3}{8}$ inch)
Lens.....	Zeiss Tessar $f:2.7$ of $3\frac{1}{8}$ inch focal length
Shutter.....	Focal Plane
Speeds.....	$1/50$ to $1/1000$ sec. and Time
Camera Size.....	$2\frac{1}{2} \times 3\frac{1}{2} \times 4\frac{1}{4}$ inch. Weight: 25 ozs.

Baby Deckrullo



For Plates or Film Packs $1\frac{3}{4} \times 2\frac{3}{8}$ " ($4\frac{1}{2} \times 6$ cm.)

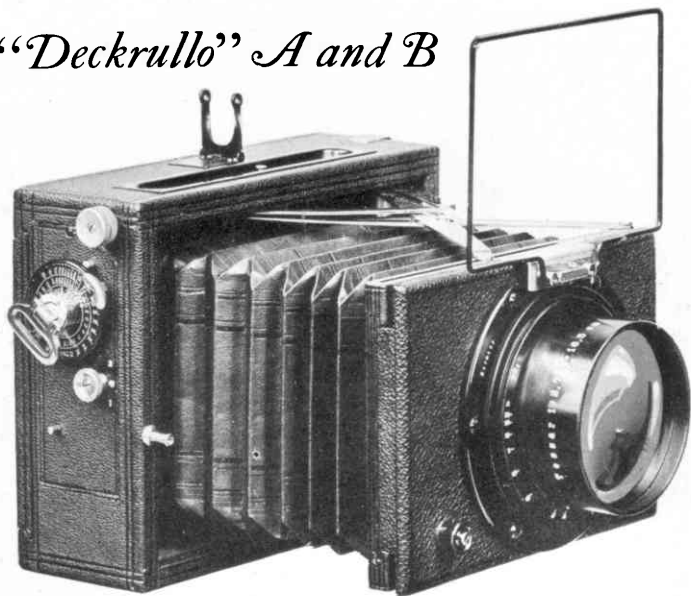
THIS convenient and compact camera, fitted with a Zeiss Tessar $f:2.7$, may be used for in- and outdoor scenes, by day and artificial light. It can be focused while the camera is closed, and is ready for instant action. The improved focal plane shutter is fitted with a gear brake, assuring accurate exposures under all conditions. Shutter speeds are set by lifting and rotating a single knob. The camera is equipped with a brilliant view finder and an Iconometer finder. Two tripod sockets are provided. Its aluminum body is covered with fine black leather.

Furnished in leather case with three metal plate holders and film pack adapter.

Picture Size... $1\frac{3}{4} \times 2\frac{3}{8}$ inch ($4\frac{1}{2} \times 6$ cm.)
Lens.....Zeiss Tessar $f:2.7$, of $3\frac{1}{8}$ inch focal length
Shutter.....Focal Plane with gear brake
Speeds..... $1/7$ to $1/1200$ sec. Time and Bulb
Bellows.....Black leather
Camera Size... $2 \times 3 \times 4\frac{1}{2}$ inch. Weight: $27\frac{1}{2}$ ozs.



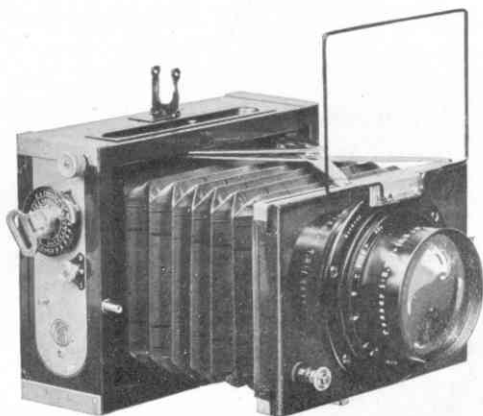
“Deckrullo” A and B



For Plates: Model A, $2\frac{1}{2} \times 3\frac{1}{4}$ " ($6\frac{1}{2} \times 9$ cm.) Model B, $3\frac{1}{2} \times 4\frac{3}{4}$ " (9×12 cm.)
For Film Packs: Model A, $2\frac{1}{4} \times 3\frac{1}{4}$ " Model B, $3\frac{1}{2} \times 4\frac{3}{4}$ " (9×12 cm.)

BOTH are universal cameras for the advanced amateur. They are instantly focused, even with the camera closed, by micrometer and scale, for distances ranging from infinity to as near as two or three feet. The Iconometer finder enables one to quickly center on moving objects. The shutter functions properly under all conditions, for contrary to others, it has no spring tension to regulate the speed but is fitted with a gear brake, permitting extremely accurate exposures from $1/10$ to $1/2800$ sec. ($1/1200$ sec. for Model A). "Time" and "Instantaneous" exposures are possible either with the hand or cable release. The cameras, made of hardwood, covered with black morocco leather, have black leather bellows and are regularly equipped with the Zeiss Tessar $f:2.7$. They may also be furnished with Zeiss Tessar $f:4.5$. The Deckrullo A and B are supplied in a leather case, including three wooden plate holders and a film pack adapter.

Tropical Deckrullo A and B



The tropical models are identical in size and equipment with the regular Deckrullo A and B, but the material from which they are built is different. A camera for use in tropical and sub-tropical countries must be immune to the intense humidity and extreme climatic conditions. Therefore, the body of the Tropical Deckrullo is constructed of thoroughly seasoned, highly polished teakwood. All corners are reinforced with metal, and all metal parts secured by screws to the hardwood. The leather bellows are especially treated to resist the attacks of climate as well as of tropical insects.

Picture Size. { Model A, $6\frac{1}{2} \times 9$ cm. See p. 36
 { Model B, 9×12 cm.

Lens..... { Zeiss Tessar $f:2.7$ Model A, $4\frac{3}{4}$
 { inch. Model B, $6\frac{1}{2}$ inch focal
 { length

Shutter..... Focal Plane Shutter with gear
 brake, Time and Bulb

Speeds..... { Model A, $1/10$ to $1/1200$ sec.
 { Model B, $1/10$ to $1/2800$ sec.

Weight..... Model A, 32 ozs. Model B, 49 ozs.





Miroflex Sport and Reflex camera

For Plates and Film Packs 9 x 12 cm. (3½ x 4¾")

THIS fascinating universal camera combines the advantages of the "Deckrullo" sport camera with those of a reflex camera, enabling the amateur to master every photographic contingency.

The finest material and workmanship distinguish this ingenious creation. The camera body consists of a light metal alloy casting, covered with fine black leather. It is easily manipulated free-hand or may be used on a tripod, like a conventional camera. Shutter speeds range from 1/3 to 1/2000 sec., and are set by lifting and rotating a single timing knob. The shutter speed may be changed at the last moment, even after the shutter has been set. A gear brake, entirely unaffected by cold, heat and moisture, always insures a smooth action, absolutely free from vibration. Focusing is accomplished by a focusing lens mount. In order to recheck the focusing on the ground glass, the shutter may be opened again, and it is not necessary to reset the pre-determined shutter speed for exposure. Single plate holders or a film pack adapter may be used. The rising and sliding frontboard will also accommodate a Zeiss "Tele-Tessar" f:6.3 lens.

Leiss Ikon Cameras



The "Miroflex" is fitted with bellows, and when folded is compact and convenient to carry. Pushing a button automatically unfolds the reflex hood, ready for instant action.

The "Miroflex," held by a neck strap, provides ideal operating conditions, as the object may be observed right side up and focused, up to the very moment of "shooting".

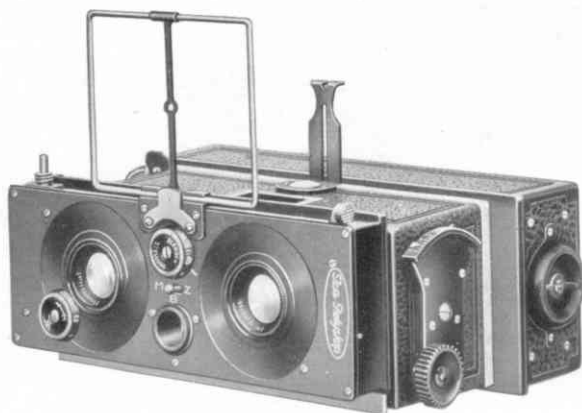
The camera equipment includes three plate holders, film pack adapter and leather carrying case.

Picture Size.....	9 x 12 cm. ($3\frac{1}{2}$ x $4\frac{3}{4}$ inch)
Lens.....	Zeiss Tessar $f:4.5$ of 6 inch focal length or Zeiss Tessar $f:2.7$ of $6\frac{1}{2}$ inch focal length
Shutter.....	Focal Plane type with gear brake
Speeds.....	$\frac{1}{3}$ to $1/2000$ sec. and Time
Camera Size (closed).....	$2\frac{3}{8}$ x $5\frac{1}{2}$ x 7 inch
Weight.....	With $f:4.5$ lens, 5 lbs. With $f:2.7$ lens, $7\frac{1}{2}$ lbs.



Leiss Ikon Cameras

Polyscope A



For Plates or Film Packs 45 x 107 mm.

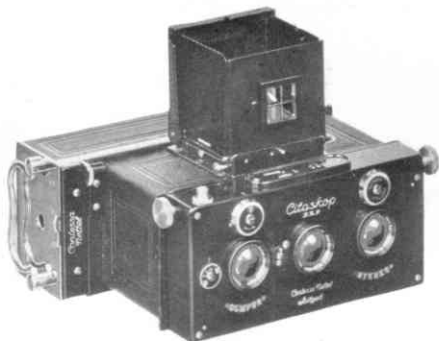
THE Polyscope A is without question the premier stereo camera. It is constructed most accurately, of elegant appearance, and has every adjustment to secure the best stereoscopic results. This model makes the popular 45 x 107 millimeter picture. The body of the Polyscope A is of aluminum with fixed extension, a screw adjustment providing a means for fine focusing. An ample rising front is provided, the effect of its elevation being indicated in the Iconometer. A brilliant indirect finder is mounted between the lenses.

The Polyscope A is supplied with a magazine for twelve plates, in a leather case. Single metal plate holders and a film pack adapter may be had at extra cost.

Picture Size.....45 x 107 mm.
Lenses.....Matched Zeiss Tessars $f:4.5$ of $2\frac{1}{2}$ inch focal length
Shutters.....Compur with cable and finger release
Speeds.....1 to $1/250$ sec. Time and Bulb
Camera Size with Plate Magazine.... $2\frac{3}{4}$ x $4\frac{1}{8}$ x 6 inch. Weight 44 ozs.
Camera Size with Single Plate Holder... $2\frac{3}{8}$ x $2\frac{3}{4}$ x $5\frac{1}{4}$ inch. Weight 24 ozs.

Zeiss Ikon Cameras

Citoskop



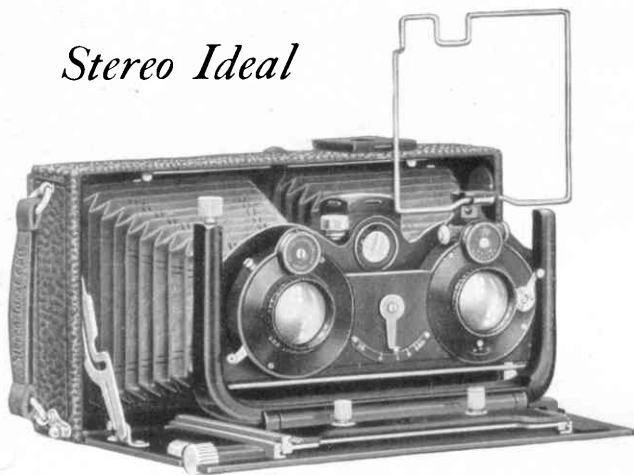
For Plates or Film Packs 45 x 107 mm.

THE "Citoskop" is a stereo reflex camera. With the Zeiss Finder Triplet, the subject is shown full size, right side up, and can be watched during exposure, thus providing a positive means of focusing. Eye-level pictures may be taken with a Newton finder and focusing scale. Stereo enthusiasts will find in this precision instrument the acme of all stereo cameras. The camera and magazine for 12 plates are furnished in a black leather carrying case. Single metal plate holders and a film pack adapter may be had at extra cost.

Picture Size.....45 x 107 mm.
Lenses.....Two matched Zeiss Tessars $f:4.5$ of $2\frac{1}{2}$ inch focal length
Shutters.....Stereo Compur with cable and finger release
Speeds.....1 to $1/250$ sec. Time and Bulb
Camera Size with Plate Magazine. $2\frac{3}{4} \times 4\frac{1}{4} \times 5\frac{3}{4}$ inch
Weight with Plate Magazine.....43 ozs.



Stereo Ideal



For Plates 6 x 13 cm. (2 3/8 x 5")

THE Stereo Ideal is an all-metal construction folding camera. The matched Tessars in Stereo Compur Shutter are supported by a heavy U-form standard, insuring absolute rigidity. The camera has rack and pinion focusing adjustment, and the objectives may be raised or lowered by means of a built-in micrometer screw movement. The back is fitted with a hooded ground glass for accurate focusing. The plate holders or film pack adapter are of the clamp-on style, so that plates may be changed easily and quickly without moving the camera. A plate magazine, holding twelve plates or eight color plates, may be supplied. This camera is particularly well adapted for color photography. The Stereo Ideal is covered with fine, black leather and supplied in a leather carrying case, with three plate holders and film pack adapter.

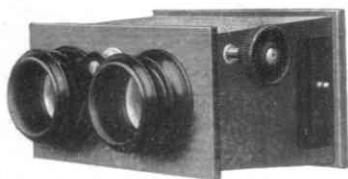
Picture Size.....	6 x 13 cm. (2 3/8 x 5 inch)
Lenses.....	Matched Zeiss Tessars f:4.5 of 3 1/2 inch focal length
Shutters.....	Compur with cable and finger release
Speeds.....	1 to 1/150 sec., Time and Bulb
Bellows.....	Black leather
Camera Size.....	1 3/4 x 3 3/4 x 6 1/4 inch
Weight.....	44 ozs.

Leiss Ikon Cameras



Transposing

STEREO PRINTING FRAMES



STEREOSCOPES

of mahogany for transparencies

In two sizes: Model A for 45x107 mm. Model B for 6x13 cm.



"DIAPHOT"

EXPOSURE Meter to determine quickly the correct exposure or diaphragm opening for any subject, in almost any light. No calculating to do, no complicated table to use and no paper to expose! The diaphragm markings are in both U. S. and *f* systems, *f*:4.5 and smaller. It is about the size of a small thin watch and beautifully made. Supplied in a neat leather purse.

DISTANCE METER

WITH this pocket size Distance Meter the photographer can instantly measure distances from 4 to 100 feet. Looking through the eye-piece, the circular distance scale is rotated until the subject appears natural. If the distance is incorrectly set the image seen through the meter appears in two parts.





Miraphot

WITH the "Miraphot" Automatic Enlarger it is as simple to make enlargements as contact prints. Enlargements of 1.3 to 3.5 diameters may be made, the maximum size being 11 x 14 inches. The largest negative from which enlargements can be made is 9 x 12 cm. ($3\frac{1}{2}$ x $4\frac{3}{4}$ inches). The Miraphot is always in focus, so it is only necessary to move the sliding handle up or down until the picture appears in the desired size. Turning a knob places a red glass over the lens so that the sensi-

tized paper may remain in place, while adjusting for the required size.

The construction of the Miraphot is entirely of metal, attractively finished in black and nickel. It can be connected to any light socket.

The lamp housing consists of a specially designed parabolic reflector which produces even and brilliant illumination.

Enlargements made with a Miraphot from small negatives will equal if not surpass prints obtained from larger negatives, thus allowing a substantial saving in the cost of films or plates. The Miraphot is supplied with electric bulb, cable, socket and switch.





CARL ZEISS PHOTO LENSES

for every photographic purpose are unsurpassed in definition and covering power

TESSARS $f:4.5-6.3-2.7-3.5-5-10-12.5$.

DISTAR, PROXAR

Supplementary lenses for TESSAR.

TELE-TESSARS $f:6.3$.

DOUBLE PROTARS $f:7-6.3-7.7$.

PROTARS $f:18$ PROTAR LENSES $f:12.5$.

Sets of PROTARS.

MAGNAR TELE OBJECTIVE and TELEPHOTO combinations.

TRIOTARS $f:3-3.5$ and TRIPLETS $f:4.8-5$.

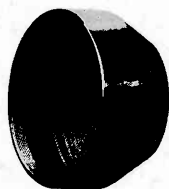
APOCHROMAT TESSAR and PLANAR PROCESS LENSES and accessories.

YELLOW FILTERS. DUCAR FILTERS for color photography.

Special equipment for amateur movie cameras.

Ask for Zeiss photographic lens catalog.

Pamphlet "How Zeiss lenses are made" free on request.



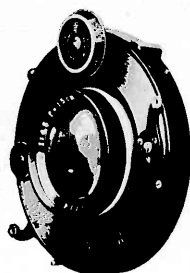
Sun Shade



Filter



Distar
or
Proxar



Zeiss Tessar in Compur
Shutter

*D*ISTAR and Proxar are supplementary lenses. Distars increase, Proxars shorten the focal length of the camera lens. On page two are shown reproductions of photographs made with the Carl Zeiss Tessar $f:4.5$ of $5\frac{1}{4}$ inch focus on an Ideal B Camera, one of them with a Distar added and another with a Proxar added to the Tessar. This illustrates the advantage a camera owner has in being able to change the focus of his lens, resulting with Distar in a telephoto, with Proxar in a wide-angle lens combination, by a very simple and inexpensive method.

Zeiss Yellow Filters, made of one piece of special Jena yellow glass, render the intensity values of colors as perceived by the eye. They are supplied in two densities, light requiring 5x and dark requiring 10x exposure.

Zeiss Sun Shades to fit the camera lenses.

Zeiss Ducar Filters for color photography (Autochrome and Agfa Plates) are compensating filters, eliminating the necessity of special scales, focusing screens, etc.

Carl Zeiss Photo Lens Catalog on request.





THE following list of double extension* Zeiss Ikon Cameras, fitted with Carl Zeiss Tessar Lenses $f:4.5$, shows which Zeiss Distar or Proxar Lenses may be used. To order Distar or Proxar Lenses use designations as given below.

Camera	Distar		Proxar	
	Combined focal length, inches	Designation	Combined focal length, inches	Designation
Icarette L $4\frac{1}{8}$ inch	$5\frac{1}{8}$ 6	2/Co* 3/Co*	$3\frac{1}{2}$	2/Co*
Nixe A $5\frac{1}{4}$ inch	$7\frac{1}{4}$ $8\frac{3}{4}$	2/III 3/III	$4\frac{1}{4}$	2/III
Nixe B 6 inch	8 10	2/IV 3/IV	$4\frac{3}{4}$	2/IV
Ideal A $4\frac{3}{4}$ inch	$6\frac{1}{4}$ $7\frac{1}{2}$	2.5/Coa 3.5/Coa	$3\frac{3}{4}$	2/Coa
Ideal B $5\frac{1}{4}$ inch { 6 inch }	$7\frac{1}{4}$ $8\frac{3}{4}$ $9\frac{3}{4}$ 8 10	2/III 3/III 3.5/III 2/IV 3/IV	$4\frac{1}{4}$ $4\frac{3}{4}$	2/III 2/IV
Trona $5\frac{1}{4}$ inch	$7\frac{1}{4}$ $8\frac{3}{4}$	2/III 3/III	$4\frac{1}{4}$	2/III
Orix (Trix) $6\frac{1}{2}$ inch	$8\frac{1}{2}$ 11 $12\frac{1}{2}$	1.5/VI 2.5/VI 3/VI	$5\frac{1}{2}$	1.5/VI
Universal Juwel A 6 inch { 6 1/2 inch }	8 10 $11\frac{1}{4}$ $8\frac{1}{2}$ 11 $12\frac{1}{2}$	2/IV 3/IV 3.5/IV 1.5/VI 2.5/VI 3/VI	$4\frac{3}{4}$ $5\frac{1}{2}$	2/IV 1.5/VI
Universal Juwel B $8\frac{1}{4}$ inch	$11\frac{3}{4}$ $13\frac{1}{4}$ 16	1.5/VII 2/VII 2.5/VII	7	1/VII
Reflex Tessar $f:4.5$ 6 inch	8	2/IV	Proxar cannot be used for infinity	

* To use Distars and Proxars on single extension cameras or cameras not equipped with ground glass, would require the fitting of a secondary special infinity scale on the camera bed.



MAGNIFIERS

Aplanatic Focusing Magnifiers 6x, 8x or 10x



With sliding sleeve
\$6



With clamping collar
\$10



With tripod
\$7.50

Aplanatic Folding Magnifiers



2 1/2x . . \$5.00

6x 6.50

8x 6.50

10x 6.50

Double lens folding, magnifications: 3x, 4x and 7x—\$11

Picture Viewers

of 7, 9, 11, 15 cm. focal length each, magnifying 3.5x, 2.7x, 2.3x, 1.7x, respectively, to view photographs in their proper perspective and natural relief. Large field of view.



\$5.00

Ask for complete catalog on Zeiss Magnifiers.



Carl Zeiss Prism Binoculars

AMONG the more than twenty popular models of Zeiss binoculars there is one for every purpose.

As a companion on your travels, for sports, on hunting trips, the Zeiss will bring out distant scenes in remarkable detail.

For nature lovers the Zeiss binocular can easily be converted into a magnifier by adding an objective front lens.

Binocular booklet describing all models sent on request.

Smallest circle shows all that can be seen with an 8-power non-prismatic glass.

Middle circle, the field of view of the average 8-power prismatic binocular.

The entire circle, the field of view of a Zeiss 8-power wide-angle Prism Binocular.





COLONEL LINDBERGH'S WELCOME IN NEW YORK

TAKEN WITH ZEISS TESSAR 4.5 $f=12"$ FOCAL LENGTH

FABRICATED AERIAL SURVEYS INC. N.Y.C.