



This manual is for reference and historical purposes, all rights reserved.

This page is copyright© by M. Butkus, NJ.

This page may not be sold or distributed without the expressed permission of the producer

I have no connection with any camera company

On-line camera manual library

This is the full text and images from the manual. This may take 3 full minutes for the PDF file to download.

If you find this manual useful, how about a donation of \$3 to: M. Butkus, 29 Lake Ave., High Bridge, NJ 08829-1701 and send your e-mail address so I can thank you. Most other places would charge you \$7.50 for a electronic copy or \$18.00 for a hard to read Xerox copy.

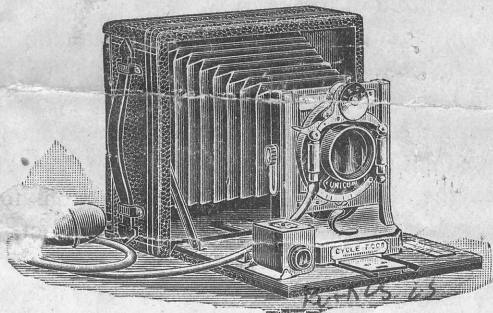
This will allow me to continue to buy new manuals and pay their shipping costs.

It'll make you feel better, won't it?

**If you use Pay Pal or wish to use your credit card,
click on the secure site on my main page.**

PayPal Name Lynn@butkus.org

INSTRUCTIONS
FOR OPERATING THE
CYCLE POCO No. 3



Rochester Camera & Supply Co.,

12-14 CALEDONIA AVE.,

Rochester, N. Y., U. S. A.

Instructions for Cycle POCO No. 3.

Hold camera in left hand. With thumb or finger of right hand press concealed button on top, which will release the bed. Lower to a horizontal position until the side arms snap into place, take the bulb and tube from its position, and place over the front of bed.

With thumb and fore-finger release the small hook shaped lever directly under shutter by a slight turn from right to left. Gently pull on same drawing the bellows and front of camera out upon the bed until the index on left side of front indicates the desired distance, as shown on focusing scale from your position to the object to be photographed which has previously been measured or estimated. (All objects 100 feet or more away are in focus when index is set on the 100 foot mark on scale.)

Take the loaded plate holder from the carrying case inserting it in back of camera in front of ground glass. Gently shove until it snaps into position. Turn the T shaped screw in a horizontal position and withdraw the slide nearest the front of camera. Set the shutter as per instructions, see page 6, composing the view by aid of the view finder and level, letting the ball in the finder rest

in the center of cross lines, which indicates that the camera is being held level. Press the bulb and the exposure is made. Insert the slide in the holder, (placing the black side of handle nearest the front of camera, which is an indication that the plate in that side of the holder has been exposed), inserting the slide perfectly even, not one corner at a time. Turn the T shaped screw securing the slides, withdraw holder by using the right hand drawing slightly toward the rear, reverse holder and proceed as before.

Having completed the exposures desired, withdraw the plate holder from in front of ground-glass, placing it in the space allotted to it in the carrying-case. Release the hook-shaped lever and gently press the front back to position within the camera box, tightening the lever by turning from left to right. Place tubing around shutter, allowing the bulb to rest on the opposite side from view finder. Holding the camera with both hands, gently press with both thumbs on the side arms, which will release them, and close the bed to its original position.

In using the camera with a tripod, set up the tripod, place the camera on top inserting the tripod screw in the socket of camera, screwing tight. Open camera, as per instructions when using by hand. Manipulate the legs of tripod until the ball in view finder is in center of cross lines, the camera is then level. Turn button in back of camera which will open panel, exposing the ground-glass to

view. Set the shutter and turn dial to letter **T** and press bulb once, thereby opening shutter. Look upon the ground-glass and the view may be plainly seen. (A focusing cloth may be used if desired), which will greatly aid in composing the view. With the right hand manipulate the front of camera by drawing the bellows forward and back until the correct focus is obtained. (Remove focusing cloth if one has been used). Close the panel in back of camera and press bulb once to close shutter.

Turn the dial of shutter to the required position for time, bulb or instantaneous exposure. Set shutter and make the exposure. When all exposures desired are made, close the camera as previously instructed. unscrew it from tripod and place in the carrying-case.

The rising front is used when as little fore-ground as possible is desired. By turning the milled head screw on the side of front and raising the bellows, together with lens and shutter, the result is obtained and can be better understood by raising and lowering the lens while observing the view on the ground-glass.

ALWAYS re adjust the rising front to the original position before attempting to close the camera.

The entire back containing ground glass may be removed by pressing down on the small spring at top of same and gently drawing the back from the

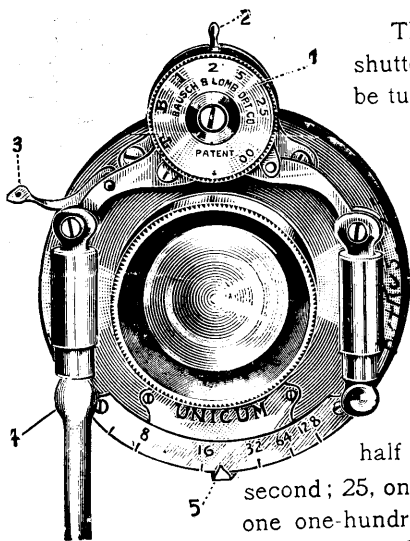
camera. This is used only when a Roll Holder is being adjusted.

To the beginner we advise manipulating the camera without taking a picture two or three times while reading the instructions, so as to become familiar with the working parts.

Instructions for Unicum Shutter.

The dial at the top of shutter marked No. 1 may be turned either to the right or left to any desired position by the use of the milled edge with thumb and finger; automatic exposures are made when the dial is at 1, 2, 5, 25 or 100; the figure 1 meaning one second; 2, one-half second; 5, one-fifth second; 25, one twenty-fifth and 100, one one-hundredth part of a second.

Should an exposure of one-half second be wanted turn the dial until the figure 2 is at the top of the shutter on a line with lever 2, as in the illustration. After turning the dial to the required speed, turn



lever 2 to the left as far as it will go, which sets the shutter. The exposure can be made with the pneumatic release by pressing bulb once, or by hand, by pressing lever 3 down, when the shutter will open and close with one operation.

Should a time exposure be desired, turn the dial until letter **T** is at the top in line with lever 2, setting the shutter as before, when one pressure on lever 3 or bulb will open the shutter. When sufficient time has been given, the second pressure closes it. Should a bulb exposure be desired, place letter **B** on the dial at the top, when one pressure of lever 3 or bulb will open shutter, when pressure is released it will close.

The figures at the bottom of the shutter indicate the size of the diaphragm opening; No. 256, being the smallest and No. 8 the largest. The diaphragm opening can be readily changed by moving lever 5 either to the right or left; the smaller openings being preferable for time exposures, the larger for instantaneous. *Butkus - US*

As all lenses need wiping occasionally to remove dust, etc., they can be readily unscrewed from the shutter for this purpose, being very particular to get each in its same position when replacing.

Do not use oil on the shutter.